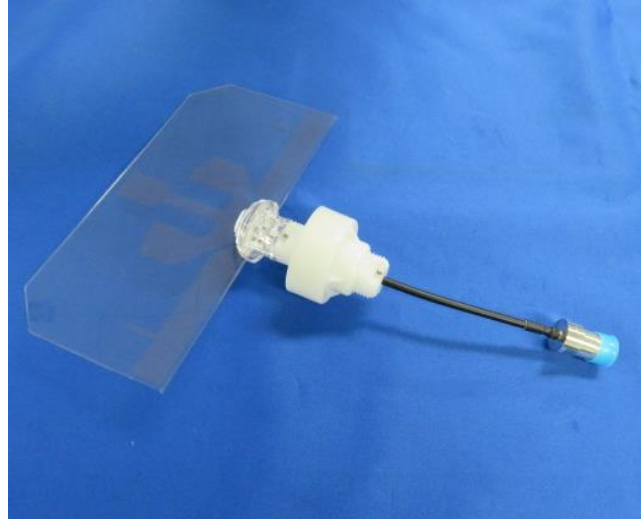
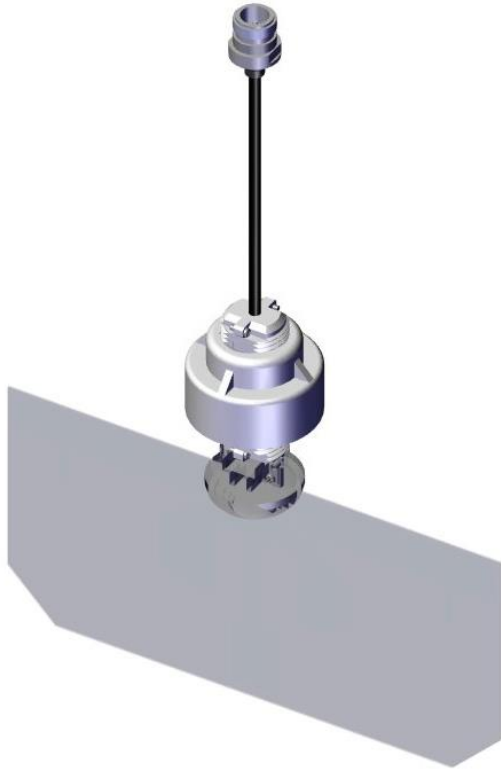


Wideband Visible Light Transmittance Antenna  
Indoor Multi-band Omni Antenna Vertical Polarization

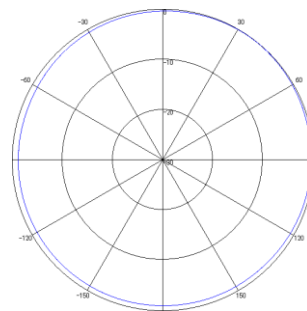
**5G / LTE**  
**Wi-fi**



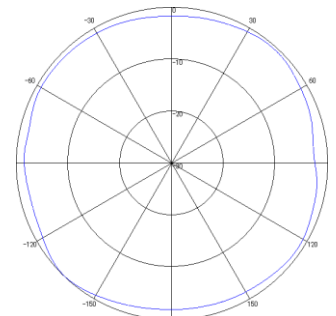
**Electrical Specifications**

Frequency Range	698MHz ~ 5850MHz	
Impedance	50Ω	
Polarization	Vertical	
V.S.W.R	≤ 2.0	
Gain	698-960MHz	Approx. 0dBi
	1427-2170MHz	Approx. 1dBi
	2545-5850MHz	Approx. 2dBi
Max. Power per Input	2.5W	
IM3	< -150dBc @ 1W × 2	
Operating Temperature	-10 ~ +50°C	
Operating Humidity	5 ~ 95%	
Weight	Approx. 140g	

**Horizontal Pattern**

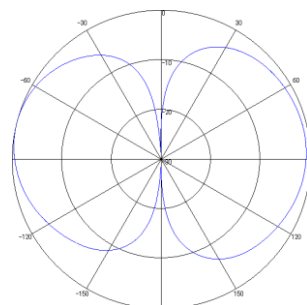


800MHz band

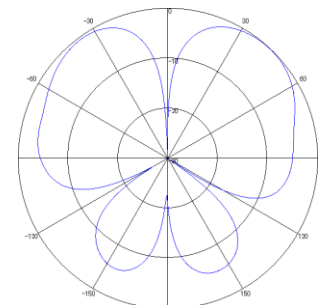


2.0GHz band

**Vertical Pattern**



800MHz band

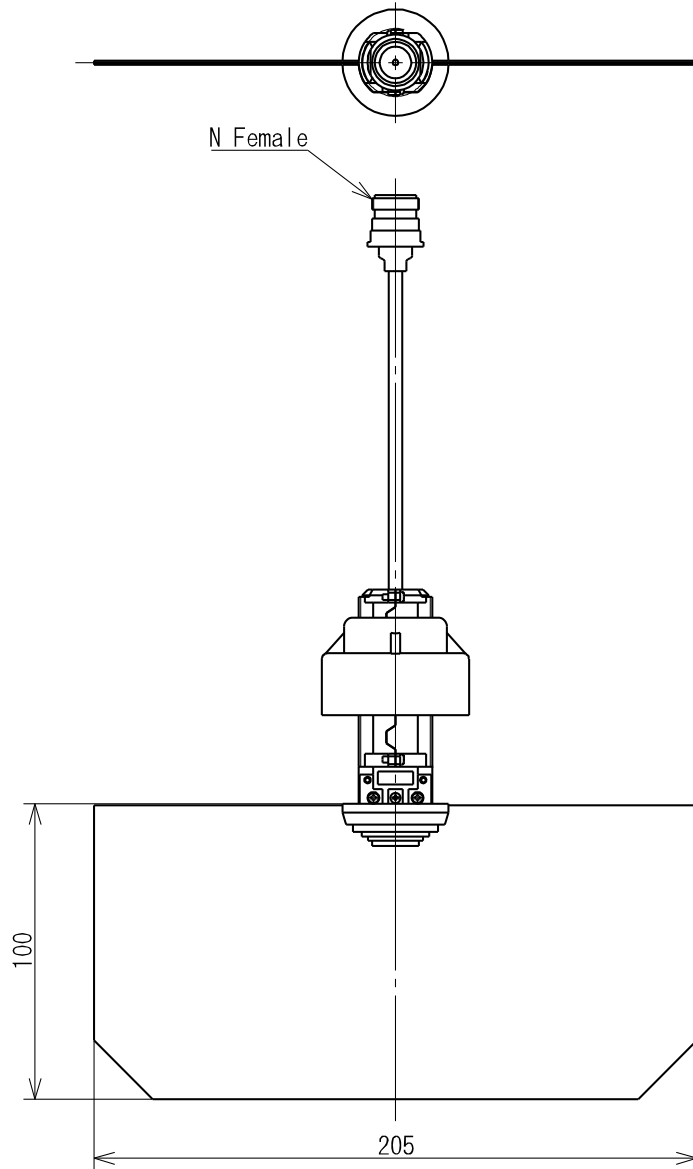


2.0GHz band

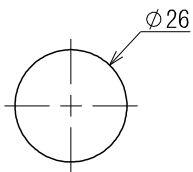
Specifications are subject to change without notice

Type GN00072

### Antenna Dimensions



### Hole pattern in the ceiling



The design and sizes are subject to change without notice.

"Wi-Fi" is a registered trademark of Wi-Fi Alliance.

Type **GN00072**

## ~References~

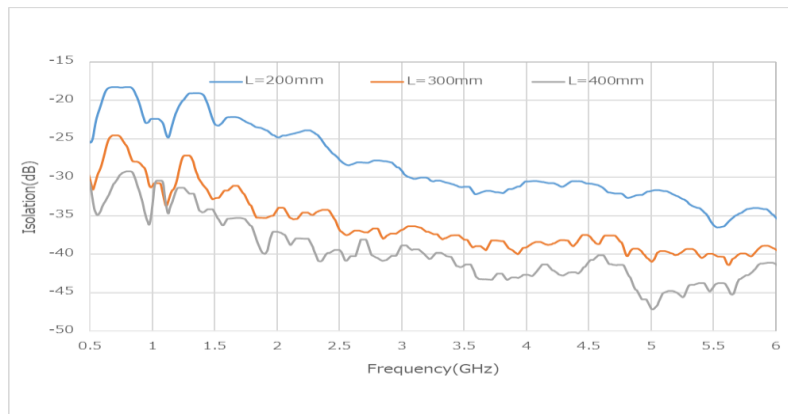
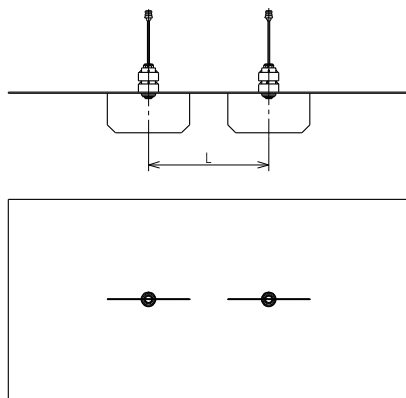
### How to use as MIMO(Multiple Input Multiple Output)

MIMO system is available by installing multiple antennas.  
 Isolation is related to the installation interval of antennas.  
 Coplanar arrangement is recommended in terms of isolation fluctuation.

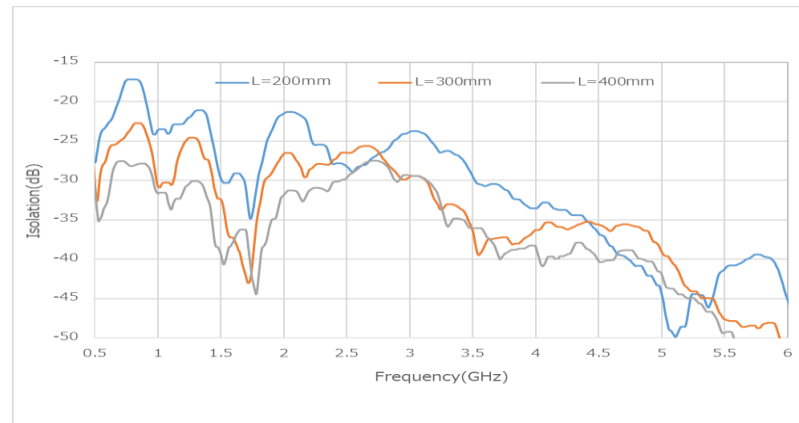
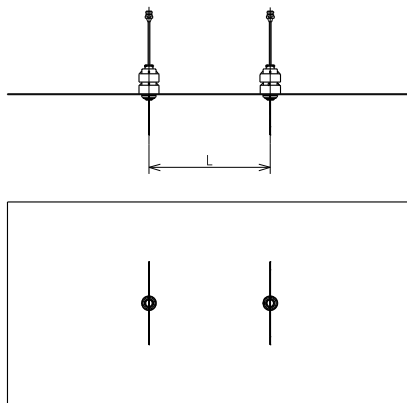
### Correlation between interval length and isolation

The charts below show the isolation (S21) of each frequency when the “L” (arrangement interval) is changed in Coplanar arrangement and Parallel arrangement.

#### OCoplanar arrangement



#### OParallel arrangement



### Recommended interval (@Coplanar arrangement)

Frequency	Required interval		
	Isolation 15dB	Isolation 25dB	Isolation 30dB
1.5GHz or less	200mm	300mm	400mm
1.5GHz~2.5GHz	—	300mm	300mm
2.5GHz~3.5GHz	—	200mm	300mm
3.5GHz or higher	—	—	200mm

※The contents of this document are reference values, and the values are not guaranteed.  
 Isolation may change depending on the installation environment.