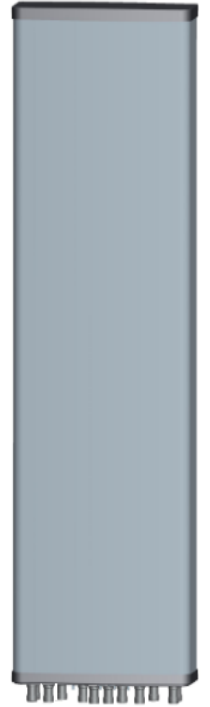


Frequency Range	698-960x2 1427-2690x6 3300-3800
Polarization	±45°
Half-Power Beam Width	65°
Electrical Downtilt	2°-12°x7

Base Station Antenna

24-ports 2x698-960/6x1427-2690/3300-3800 MHz 65°, 2 x15 / 6 x15 /16 dBi, 2 x2°-12° / 6 x2°-12°/ 2°-12°Tilt Antenna With 7 Integrated RCUs.

Electrical Specifications



General parameters	Frequency range (MHz)		3300~3800
	Polarization		±45
	Electrical downtilt(°)		2~12
	Electrical downtilt tolerance(°)		±1
Calibration and electrical parameters	Coupling factor between calibration port and each antenna port (dB)		-26±2
	Max.amplitude tolerance from calibration port to input ports(dB)		≤1
	Max.phase tolerance from calibration port to input ports(°)		≤9
	Ports VSWR		<1.5
	Avg. power per capacity (W)		40
	Co-polarization isolation between ports(dB)		≥20
Radiation parameters	Single column Beam	Gain(dBi)	15.7
		Horizontal 3dB beam width(°)	65
		Vertical 3dB beam width(°)	6
		Cross polar ratio(dB, 0°)	≥16
		Front to back ratio(dB)	≥25
		Vertical sidelobe suppression for first sidelobe above main beam(dB)	≥15
	65° Broadcast beam	Gain(dBi)	16.6
		Horizontal 3dB beam width(°)	65
		Vertical 3dB beam width(°)	6
		Cross polar ratio(dB, 0°)	≥16
		Front to back ratio(dB)	≥25
		Vertical sidelobe suppression for first sidelobe above main beam(dB)	≥15
	Service beam	0°direct beam gain(dBi)	21.1
		0°direct beam horizontal 3dB beam width(°)	19
		0°direct beam front to back ratio(dB)	≥28
0°direct beam cross polar ratio(axial)(dB)		≥18	



Base Station Antennas

Type **BMF7-2B6H1Q-RG65**

Frequency Range	698-960x2 1427-2690x6 3300-3800
Polarization	±45°
Half-Power Beam Width	65°
Electrical Downtilt	2°-12°x7

Frequency Range(MHz)	2x698-960			6x1427-2690					
	698-824	824-894	880-960	1427-1510	1695-1920	1920-2180	2300-2400	2490-2690	
Polarization	±45°								
Horizontal 3dB Beamwidth(°)	69±5	65±4	60±4	70±5	67±4	65±3	58±4	60±4	
Vertical 3dB Beamwidth(°)	10±0.9	9.5±0.6	8.6±0.5	9.0±0.8	7.5±0.8	6.5±0.6	6±0.6	5.5±0.6	
Gain (dBi)	14.4±0.5	14.9±0.5	15.5±0.5	15.5±0.5	16.5±0.5	17.0±0.5	17.5±0.5	17.8±0.5	
Electrical Downtilt	2°-12°			2°-12°					
Upper Sidelobe Suppression(dB)	First	≥16	≥16	≥16	≥16	≥16	≥16	≥16	≥16
Front-to-Back Ratio Total Power, ±30° (dB)		≥22	≥23	≥25	≥25	≥25	≥25	≥25	≥25
Cross polar ratio	Main direction(dB)	≥17	≥17	≥17	≥17	≥17	≥17	≥17	≥17
	±60° (dB)	≥7	≥7	≥7	≥7	≥7	≥7	≥7	≥7
Isolation ports	≥25 dB								
Isolation Frequency	≥30 dB								
VSWR	< 1.5								
Intermodulation IM3	< -150 dBc(2x43dBm carrier)								
Impedance	50 Ω								
Max. Power per Input (at 50°C ambient temperature)	500 W			250 W					
Lightning Protection	DC Ground								

Mechanical Specifications

Radome Material	Fiberglass
Connector Type and Location	4.3-10x16, Bottom 1xMQ5 Male+1xMQ4 Male iRCU in:2 x 8 pin male iRCU out:2 x 8 pin female
Dimensions, HxWxD(mm)	2100 x 499 x 180
Packing Size(mm)	2400 x 599 x 311
Weight ,w/o Mounting kit(kg)	40
Weight with Downtilt Bracket(kg)	47
Packing Weight (with Downtilt Bracket) (kg)	58
Max. Wind Velocity(mph)	150
Mounting hardware	φ 50 mm ~ φ 115 mm
Operational Temperature(°C)	-40 to +65
Operational Humidity(%)	<95
Wind Load at 100mph (Frontal/lateral/Rearside(N))	1276/204/952

This publication is issued to information only and is not to form part of any order or contract DENGYO reserves the right to changes specifications without prior notice.

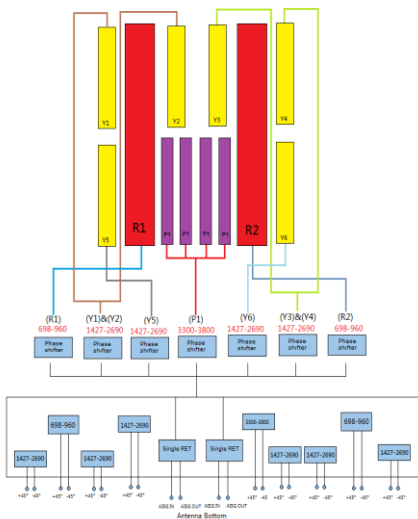
Type BMF7-2B6H1Q-RG65

Frequency Range	698-960x2 1427-2690x6 3300-3800
Polarization	±45°
Half-Power Beam Width	65°
Electrical Downtilt	2°-12°x7

Integrated RET Properties

RET Type	7x Type 1 Single RET	
Protocols	Compliant to AISG 2.0/3GPP	
Input voltage range	+10~+30VDC(pin 6)	
Power consumption	<2W(stand by);<13W(motor activated)	
Connectors	AISG	2 x 8 pin connector acc. To IEC 60130-9 Acc.to AISG Daisy chain in:male Daisy chain out:female
	Antenna	Two motor shaft(Embedded motor)
Hardware interface	AISG	RS485A/B(pin5/pin3);Power supply(pin6); DC return(pin7)Acc.to AISG
Adjustment time(full range)	40 sec(typically,depending on antenna)	
Adjustment Cycles	≥10000	
Torque Max	≥160mN.m	
Lightning Protection Rating	IEC 61000-4-5 Current Pulse Profile,8/20 μs 10 Repetitions Min.@ 6kA IEC 61312-1 Annex B Current Pulse Profile, 10/350 μs,200 Repetitions Min. @ 0.6KA	

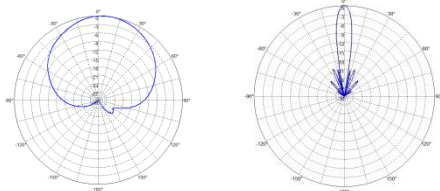
COMPREHENSIVE TILT CONFIGURATION



Frequency Range	Array	RET Unique ID
698-960MHz	R1	NDPMXXXXXXXX-7090R1
698-960MHz	R2	NDPMXXXXXXXX-7090R2
1427-2690MHz	Y1	NDPMXXXXXXXX-1727Y1
1427-2690MHz	Y2	NDPMXXXXXXXX-1727Y2
1427-2690MHz	Y3	NDPMXXXXXXXX-1727Y3
1427-2690MHz	Y4	NDPMXXXXXXXX-1727Y4
1427-2690MHz	Y5	NDPMXXXXXXXX-1727Y5
1427-2690MHz	Y6	NDPMXXXXXXXX-1727Y6
3300-3800MHz	P1	NDPMXXXXXXXX-3338P1

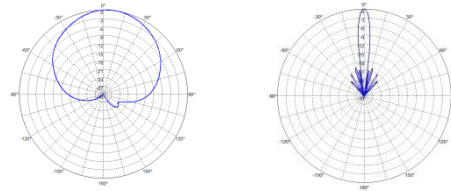
Frequency Range	698-960x2 1427-2690x6 3300-3800
Polarization	±45°
Half-Power Beam Width	65°
Electrical Downtilt	2°-12°x7

Radiation Pattern (698 - 824MHz)



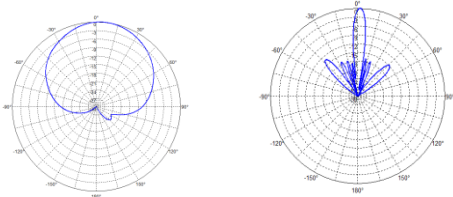
Horizontal Pattern Vertical Pattern

Radiation Patterns (824 - 960 MHz)



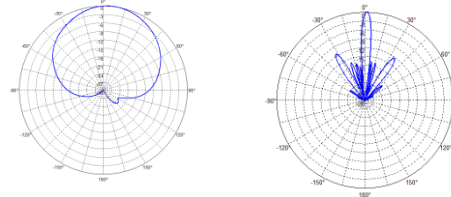
Horizontal Pattern Vertical Pattern

Radiation Patterns (1427- 2170 MHz)



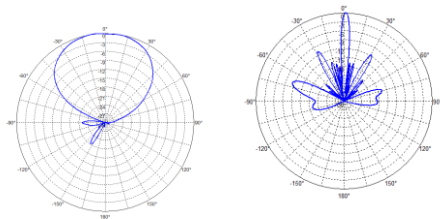
Horizontal Pattern Vertical Pattern

Radiation Patterns (2300 - 2400 MHz)



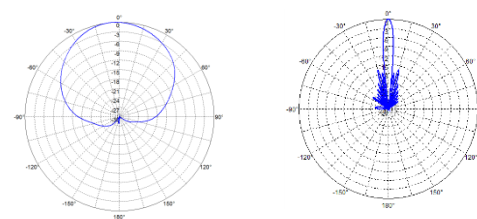
Horizontal Pattern Vertical Pattern

Radiation Pattern (2490- 2690 MHz)



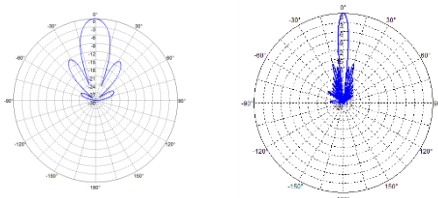
Horizontal Pattern Vertical Pattern

Radiation Pattern (3300- 3800 MHz)



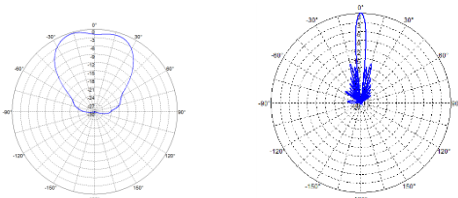
Horizontal Pattern Vertical Pattern

Radiation Pattern (3300- 3800 MHz)(Service Beam)



Horizontal Pattern Vertical Pattern

Radiation Pattern (3300- 3800 MHz)(Broadcast Beam)



Horizontal Pattern Vertical Pattern