

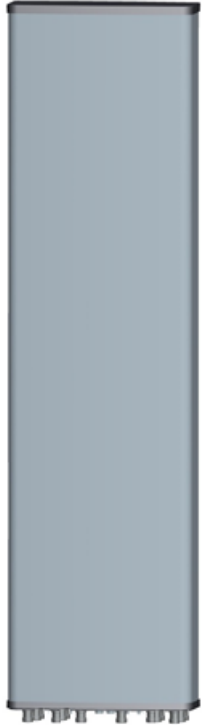
Frequency Range	698-960x1 1710-2690x4
Polarization	±45°
Half-Power Beam Width	65°
Electrical Downtilt	2° - 12°x5

Type DEC9-1LB4J-RE65

Base Station Antenna

10-ports 698-960 / 1695-2690/ 1695-2690/1695-2690/1695-2690 MHz 65°, 17/18/18/18/18 dBi, 2°-12° / 2°- 12°/ 2°- 12° / 2°- 12°/ 2°- 12°Tilt Antenna With 5 Integrated RCUs.

Electrical Specifications



Frequency Range(MHz)		698-960			4x1695-2690			
		698-806	790-894	880-960	1695-1920	1920-2170	2300-2490	2490-2690
Polarization		±45°						
Horizontal 3dB Beamwidth(°)		69±4.5	67±4.5	65±5	69±6.1	65±6.5	65±6	62±6.5
Vertical 3dB		8.4±0.9	7.8±0.6	7.2±0.7	6.5±0.9	6.0±0.6	5.4±0.5	4.8±0.5
Gain (dBi)		16±0.6	16.5±0.4	16.8±0.6	16.6±0.6	17.2±0.4	17.4±0.5	17.4±0.6
Electrical Downtilt		2°-12°			2°-12°			
Upper Sidelobe Suppression(dB)	First	≥16	≥16	≥16	≥16	≥16	≥17	≥17
Front-to-Back Ratio Total Power, ±30° (dB)		≥23	≥24	≥25	≥25	≥26	≥27	≥27
Cross polar ratio	Main direction(dB)	≥17	≥18	≥17	≥18	≥18	≥18	≥18
	±60° (dB)	≥7	≥8	≥8	≥6	≥7	≥5	≥4
Isolation ports		≥28 dB						
Isolation Frequency		≥28 dB						
VSWR		< 1.5						
Intermodulation IM3		< -153 dBc(2x43dBm carrier)						
Impedance		50 Ω						
Max. Power per Input (at 50°C ambient)		500 W			250 W			
Lightning Protection		DC Ground						

Mechanical Specifications

Radome Material	Fiberglass
Connector Type and Location	4.3-10x10, Bottom iRCU in:1 x 8 pin male iRCU out:1 x 8 pin female
Dimensions,HxWxD(mm)/(inches)	2700 x 379x 159
Packing Size(mm)/(inches)	2930 x 494 x 279
Weight ,w/o Mounting kit(kg)/(lbs)	34
Weight w/ Downtilt Bracket(kg)/(lbs)	43
Packing Weight (w/ Downtilt Bracket) (kg)/(lbs)	47
Max. Wind Velocity(mph)	150
Mounting hardware	φ 50 mm ~ φ 115 mm
Operational Temperature(°C)	-40 to +70
Operational Humidity(%)	<95
Mechanical tilt(Optional)	0°-10°
Wind Load at 150km/h (Frontal/lateral/Rearside(N))	960/500/1070

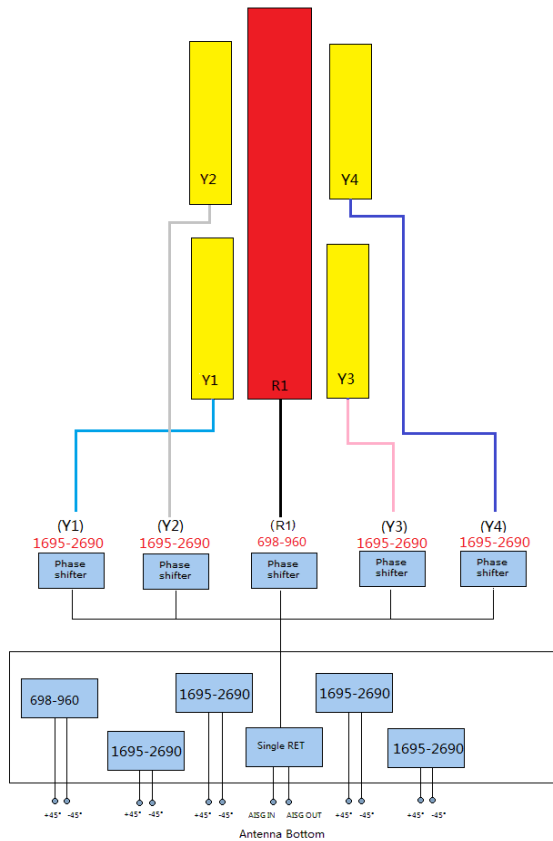
Frequency Range	698-960x1 1710-2690x4
Polarization	±45°
Half-Power Beam Width	65°
Electrical Downtilt	2° - 12°x5

Type DEC9-1LB4J-RE65

Integrated RET Properties

RET Type	5 x Type 1 Single RET	
Protocols	Compliant to AISG 3.0/3GPP	
Input voltage range	+10~+30VDC(pin 6)	
Power consumption	<2W(stand by);<10W(motor activated)	
Connectors	AISG	2 x 8 pin connector acc. To IEC 60130-9 Acc.to AISG Daisy chain in:male Daisy chain out:female
	Antenna	Two motor shaft(Embedded motor)
Hardware interface	AISG	RS485A/B(pin5/pin3);Power supply(pin6); DC return(pin7)Acc.to AISG
Adjustment time(full range)	40 sec(typically,depending on antenna)	
Adjustment Cycles	≥10000	
Torque Max	≥160mN.m	
Lightning Protection Rating	IEC 61000-4-5 Current Pulse Profile,8/20 μs 10 Repetitions Min.@ 6kA IEC 61312-1 Annex B Current Pulse Profile, 10/350 μs,200 Repetitions Min. @ 0.6kA	

COMPREHESIVE TILT CONFIGURATION



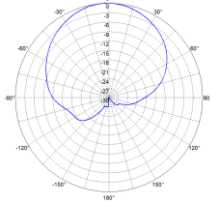
Frequency Range	Array	RET Unique ID
698-960MHz	R1	NDPMXXXXXXXX-7090R1
1695-2690MHz	Y1	NDPMXXXXXXXX-1727Y1
1695-2690MHz	Y2	NDPMXXXXXXXX-1727Y2
1695-2690MHz	Y3	NDPMXXXXXXXX-1727Y3
1695-2690MHz	Y4	NDPMXXXXXXXX-1727Y4

Note: (1) Physical RET Unit containing (5) Single RET

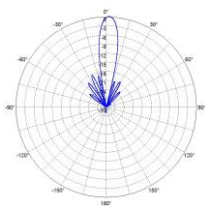
Frequency Range	698-960x1 1710-2690x4
Polarization	±45°
Half-Power Beam Width	65°
Electrical Downtilt	2° - 12°x5

Type **DEC9-1LB4J-RE65**

Radiation Pattern (698 - 824 MHz)

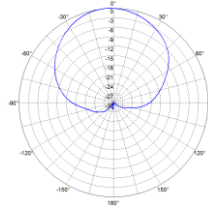


Horizontal Pattern

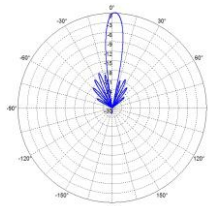


Vertical Pattern

Radiation Patterns (824 - 960 MHz)

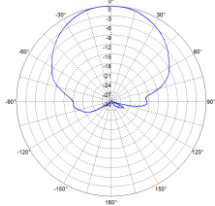


Horizontal Pattern

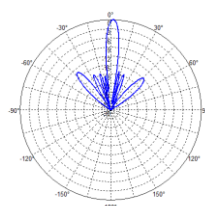


Vertical Pattern

Radiation Pattern (1695 - 2200 MHz)

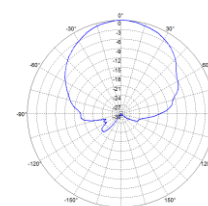


Horizontal Pattern

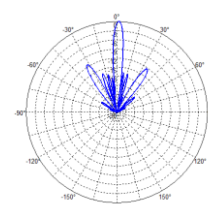


Vertical Pattern

Radiation Patterns (2490 - 2690 MHz)



Horizontal Pattern



Vertical Pattern