

Frequency Range	1710-2690x3
Polarization	±45°
Half-Power Beam Width	65°
Electrical Downtilt	2° - 12°x3

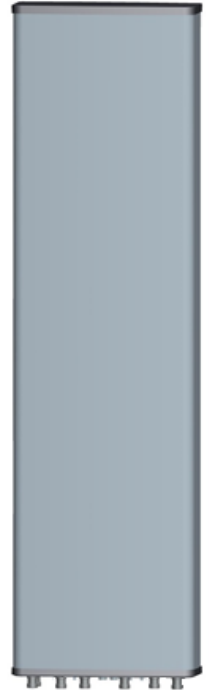
Type HEX5-3J-RC65

Base Station Antenna

 6-ports 1710-2690/1710-2690 /1710-2690 MHz 65°, 18/18 /18 dBi, 2°-12° / 2°-12°/ 2°-12° Tilt Antenna
 With 3 Integrated RCU.


Electrical Specifications

Frequency Range(MHz)		3X1710-2690				
		1710-1880	1850-1990	1920-2170	2300-2400	2490-2690
Polarization		±45°				
Horizontal 3dB Beamwidth(°)		67±5	65±5	63±5	61±5	58±6
Vertical 3dB Beamwidth(°)		7.0±0.7	6.7±0.7	6.3±0.6	5.4±0.5	5.0±0.5
Gain (dBi)		17.0±0.5	17.2±0.5	17.5±0.5	17.9±0.5	17.8±0.6
Electrical Downtilt		2 - 12				
Upper Sidelobe Suppression(dB)	First	>16	>16	>16	>16	>16
Front-to-Back Ratio Total Power, ±30° (dB)		>25	>26	>26	>26	>26
Cross polar ratio	Main direction(dB)	>19	>20	>20	>20	>20
	±60° (dB)	>10	>10	>10	>9	>8
Isolation ports (dB)		≥28				
Isolation Frequency (dB)		≥28				
VSWR		<1.5				
Intermodulation IM3		<-153 dBc (2x43dBm carrier)				
Impedance		50 Ω				
Max. Power per Input (at 50°C ambient temperature)		250 W				
Lightning Protection		DC Ground				



Mechanical Specifications

Radome Material	Fiberglass
Connector Type and Location	4.3-10x6 ,Bottom iRCU in:1 x 8 pin male iRCU out:1 x 8 pin female
Dimensions,HxWxD(mm)/(inches)	1399x379x89
Packing Size(mm)/(inches)	1579 x475x209
Weight ,w/o Mounting kit(kg)	15
Weight w/ Downtilt Bracket(kg)	20
Packing Weight (w/ Downtilt Bracket) (kg)/(lbs)	23
Max. Wind Velocity(mph)	150
Mounting hardware	Φ 50 mm ~ Φ 115 mm
Operational Temperature(°C)	-40 to +65
Operational Humidity(%)	<95
Wind Load at 150km/h (Frontal/lateral/Rearside(N))	490/170/545

Base Station Antennas

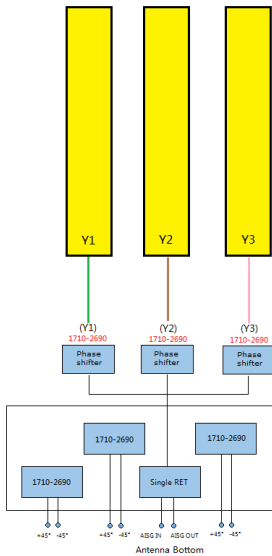
Frequency Range	1710-2690x3
Polarization	±45°
Half-Power Beam Width	65°
Electrical Downtilt	2° - 12°x3

Type **HEX5-3J-RC65**

Integrated RET Properties

RET Type	3xType 1 Single RET	
Protocols	Compliant to AISG 3.0/3GPP	
Input voltage range	+10~+30VDC(pin 6)	
Power consumption	<2W(stand by);<10W(motor activated)	
Connectors	AISG	2 x 8 pin connector acc. To IEC 60130-9 Acc.to AISG Daisy chain in:male Daisy chain out:female
	Antenna	Two motor shaft(Embedded motor)
Hardware interface	AISG	RS485A/B(pin5/pin3);Power supply(pin6); DC return(pin7)Acc.to AISG
Adjustment time(full range)	40 sec(typically,depending on antenna)	
Adjustment Cycles	≥10000	
Torque Max	≥160mN.m	
Lightning Protection Rating	IEC 61000-4-5 Current Pulse Profile,8/20 μs 10 Repetitions Min.@ 6kA IEC 61312-1 Annex B Current Pulse Profile, 10/350 μs,200 Repetitions Min. @ 0.6KA	

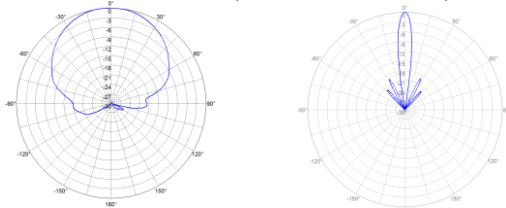
COMPREHENSIVE TILT CONFIGURATION



Frequency Range	Array	RET Unique ID
1710-2690MHz	Y1	NDPMXXXXXXXX-172Y1
1710-2690MHz	Y2	NDPMXXXXXXXX-172Y2
1710-2690MHz	Y3	NDPMXXXXXXXX-172Y3

Note: (1) Physical RET Unit containing (3) Single RET

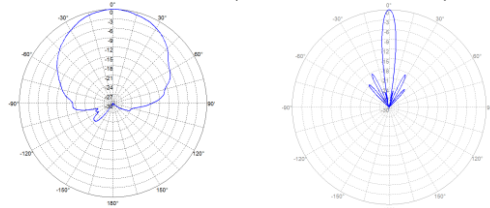
Radiation Pattern (1710 - 2200 MHz)



Horizontal Pattern

Vertical Pattern

Radiation Patterns (2200 - 2690 MHz)



Horizontal Pattern

Vertical Pattern

This publication is issued to information only and is not to form part of any order or contract DENGYO reserves the right to changes specifications without prior notice.