

Frequency Range	1710-2690x3
Polarization	±45°
Half-Power Beam Width	65°
Electrical Downtilt	2° - 12°x3

Type HEX7-3J-RC65

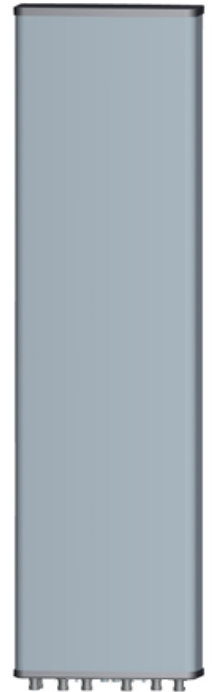
Base Station Antenna

6-ports 1710-2690/1710-2690 /1710-2690 MHz 65°, 19/19 /19 dBi, 2°-12° / 2°-12°/ 2°-12° Tilt Antenna
With 3 Integrated RCUs.



Electrical Specifications

Frequency Range(MHz)		3X1710-2690		
		1710-2170	2170-2490	2490-2690
Polarization		±45°		
Horizontal 3dB Beamwidth(°)		68±4	63±4	61±4
Vertical 3dB Beamwidth(°)		5.6±0.6	4.9±0.5	4.2±0.4
Gain (dBi)		18.1±0.5	18.7±0.5	19.2±0.5
Electrical Downtilt		2 - 12		
Upper Sidelobe Suppression(dB)	First	>15	>15	>15
Front-to-Back Ratio Total Power, ±30° (dB)		>25	>26	>26
Cross polar ratio	Main direction(dB)	>15	>15	>15
	±60° (dB)	>10	>10	>10
Isolation ports (dB)		≥28		
Isolation Frequency (dB)		≥28		
VSWR		<1.5		
Intermodulation IM3		<-150 dBc (2x43dBm carrier)		
Impedance		50 Ω		
Max. Power per Input (at 50°C ambient temperature)		250 W		
Lightning Protection		DC Ground		



Mechanical Specifications

Radome Material	Fiberglass
Connector Type and Location	4.3-10x6 ,Bottom iRCU in:1 x 8 pin male iRCU out:1 x 8 pin female
Dimensions,HxWxD(mm)	1970x380x156
Packing Size(mm)	2180 x470x250
Weight ,w/o Mounting kit(kg)	20
Weight w/ Downtilt Bracket(kg)	25
Packing Weight (w/ Downtilt Bracket) (kg)	28
Max. Wind Velocity(mph)	150
Mounting hardware	φ 50 mm ~ φ 115 mm
Operational Temperature(°C)	-40 to +65
Operational Humidity(%)	<95
Wind Load at 150km/h (Frontal/lateral/Rearside(N))	1027/444/1081

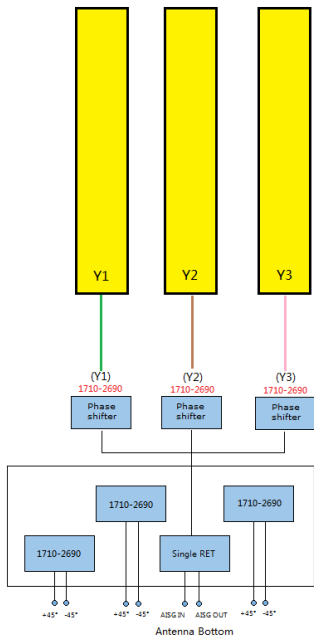
Frequency Range	1710-2690x3
Polarization	±45°
Half-Power Beam Width	65°
Electrical Downtilt	2° - 12°x3

Type HEX7-3J-RC65

Integrated RET Properties

RET Type	3xType 1 Single RET	
Protocols	Compliant to AISG 3.0/3GPP	
Input voltage range	+10~+30VDC(pin 6)	
Power consumption	<2W(stand by);<10W(motor activated)	
Connectors	AISG	2 x 8 pin connector acc. To IEC 60130-9 Acc.to AISG Daisy chain in:male Daisy chain out:female
	Antenna	Two motor shaft(Embedded motor)
Hardware interface	AISG	RS485A/B(pin5/pin3);Power supply(pin6); DC return(pin7)Acc.to AISG
Adjustment time(full range)	40 sec(typically,depending on antenna)	
Adjustment Cycles	≥10000	
Torque Max	≥160mN.m	
Lightning Protection Rating	IEC 61000-4-5 Current Pulse Profile,8/20 μs 10 Repetitions Min.@ 6kA IEC 61312-1 Annex B Current Pulse Profile, 10/350 μs,200 Repetitions Min. @ 0.6kA	

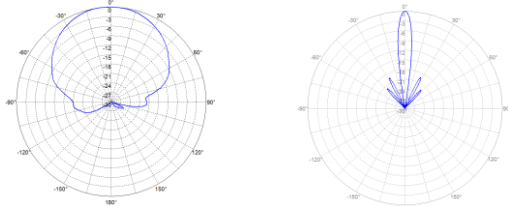
COMPREHENSIVE TILT CONFIGURATION



Frequency Range	Array	RET Unique ID
1710-2690MHz	Y1	NDPMXXXXXXXX-1727Y1
1710-2690MHz	Y2	NDPMXXXXXXXX-1727Y2
1710-2690MHz	Y3	NDPMXXXXXXXX-1727Y3

Note: (1) Physical RET Unit containing (3) Single RET

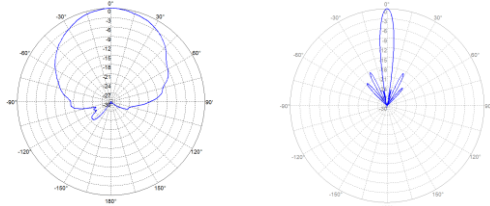
Radiation Pattern (1710 - 2200 MHz)



Horizontal Pattern

Vertical Pattern

Radiation Patterns (2200 - 2690 MHz)



Horizontal Pattern

Vertical Pattern