

Frequency Range	698~960x1 1710~2690x2
Polarization	±45°
Half-Power Beam Width	65°
Electrical Downtilt	L: 3° - 15° H: 2° - 12°

Electrical Specifications

Frequency Range (MHz)	698~960 (x1)			1710~2690 (x2)		
		698 806	806 896	896 960	1710 1920	1920 2200
Polarization	±45°					
Gain (dBi)	13.5	14.0	14.3	16	16.6	16.8
Horizontal Pattern						
Half-Power Beamwidth	68	68	67	66	60	63
Front-to-Back Ratio	≥ 25dB					
Vertical Pattern						
Half-Power Beamwidth	15	13	11	8.7	7.7	6.7
Electrical Downtilt Range	See options below					
1st Upper Sidelobe Suppression	≤ -15dB			≤ -15dB		
VSWR / Return Loss	≤ 1.5 / ≤ -14dB					
In-Band Isolation Port to Port	≥ 25dB					
Intermodulation (IMD3)	≤ -150dBc (2x43dBm carrier)					
Max. Power per Input	200 W (at 50 °C ambient temperature)					
Impedance	50 Ω					
Lightning Protection	DC ground					

Note: All the values are according to NGMN Alliance BTS Standards calculating commendation.

Mechanical Specifications

Connector	6 x 7-16 DIN(F)
Connector Position	Bottom
Radome Material	Fiberglass
Radome Color	Gray
Operating Temperature	-40 °C~65 °C
Humidity	95% RH@+30 °C
Rated Wind Speed	200 km/h, 125 mph
Rated Wind Loading (Rear)	712 N @ 160 mph
Mounting Hardware	Φ50 ~ Φ115 mm
Antenna Weight	24 Kg
Packing Weight	33Kg
Antenna Size (LxWxH)	1495 x 350 x 200 mm
Packing Size (LxWxH)	1765 x 425 x 275 mm

RET Specifications

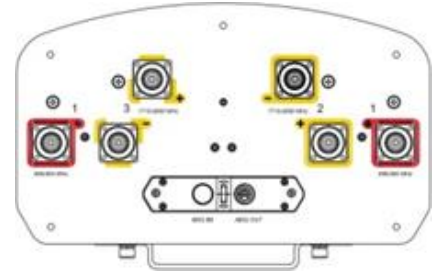
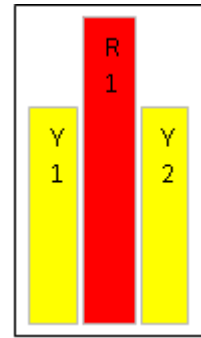
Input voltage range	10-30 V
Power Consumption	< 1 watt (standby)
Protocols Compliant	3GPP / AISG 2.0 / AISG 1.1

Electrical Angle Tilt Range

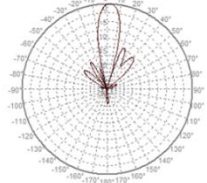
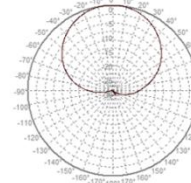
3F2C L : 3° ~ 15; H : 2° ~ 12°

Electrical Tilt adjustment

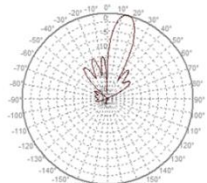
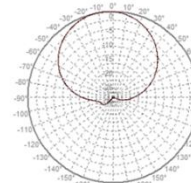
Pluggable RET



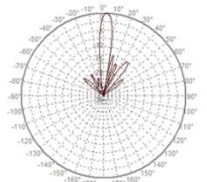
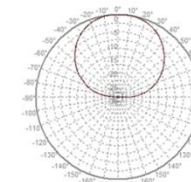
698-960MHz +45°/-45° Polarization



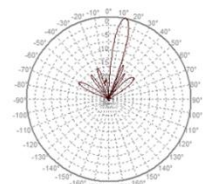
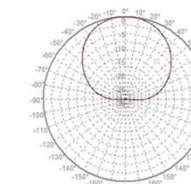
Horizontal Pattern 3° Vertical Pattern 3°
698-960MHz +45°/-45° Polarization



Horizontal Pattern 15° Vertical Pattern 15°
1710-2690MHz +45°/-45° Polarization



Horizontal Pattern 2° Vertical Pattern 2°
1710-2690MHz +45°/-45° Polarization



Horizontal Pattern 12° Vertical Pattern 12°