

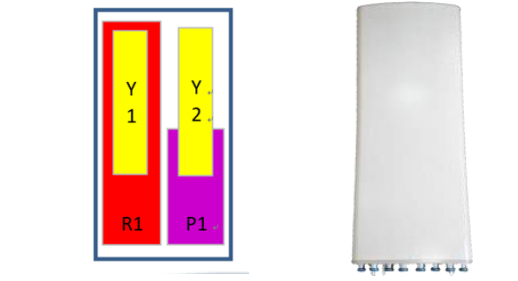
Frequency Range	698-960x1	1710-2690x1
	3300-3800	
Polarization	±45°	
Half-Power Beam Width	65°	
Electrical Downtilt	2° - 12°	

Type SAW0638-01

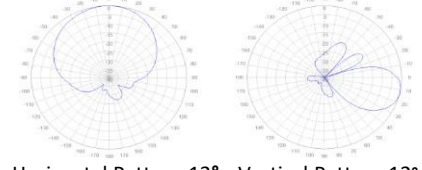
Electrical Specifications

	Frequency Range(MHz)	R1			Y1, Y2				
		698-780	780-890	890-960	1710-1880	850-1990	1920-2170	2300-2400	2490-2690
FDD	Polarization	±45°							
	Gain(dBi)	10.4	11	11.4	13.5	13.5	13.6	13.8	14
	Horizontal 3dB BW(°)	65	66	66	65	65	63	61	60
	Cross polar ratio	16			16				
	Front-to-back ratio(dB)	22	24	24	25	25	25	25	25
	Vertical 3dB BW(°)	28	25	23	11.1	10	9.5	9.3	9
	Upper sidelobe level(dB)	15			15				
	Tilt (deg)	12			2-12				
	3rd PIM(dBc, @43dBm)	≤ -150 dBc							
	VSWR	≤1.5							
	In-Band Isolation Port to Port	≥25							
	Inter-Band Isolation Port to Port	≥25							
Maxium Power (W)	350			250					

	Array ID	Bottom: P1			
		3300-3600	3600-3800		
Calboard and S parameter	Frequency Range(MHz)	3300-3600	3600-3800		
	Coupling between cal. Port to input port (dB)	-25			
	Coupling amplitude accuracy (dB)	≤1			
	Coupling phase accuracy (deg)	≤10			
	VSWR	≤1.5			
	ISO co-polor (dB)	≥19	≥19		
	ISO cross-polor (dB)	≥24	≥24		
	Maximum Power (W)	50			
	Unit Beam	Horizontal 3dB BW(deg)	75	65	
		Gain (dBi)	14.2	14.4	
Vertical 3dB BW(deg)		8	7.8		
Tilt (deg)		2-12			
Cross polar ratio@0° (dB)		18			
Cross polar ratio@±60° (dB)		8	8		
Radiation Parameter	Broadcasting Beam	Front to back ratio (dB)	23	23	
		Upper sidelobe level (dB)	15	15	
	Working Beam	0° beam	Horizontal 3dB BW(deg)	65	
			Gain (dBi)	15.1	15.2
			Vertical 3dB BW(deg)	7.9	7.7
			Cross polar ratio@±0° (dB)	15	
		±60° beam	Cross polar ratio@±60° (dB)	8	
			Front-to-back ratio (dB)	25	
			Upper sidelobe level(dB)	15	15
			Horizontal 3dB BW(deg)	15	15

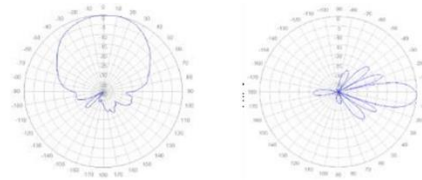


698-960MHz +45°/-45° Polarization



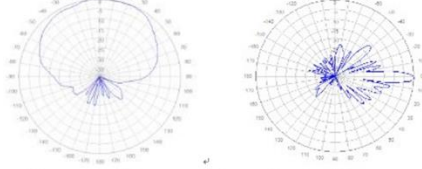
Horizontal Pattern 12° Vertical Pattern 12°

1710-2690MHz +45°/-45° Polarization



Horizontal Pattern 2° Vertical Pattern 2°

3300-3800MHz +45°/-45° Polarization



Horizontal Pattern 2° Vertical Pattern 2°

Mechanical Specs

Dimensions (L x W x D in mm)	800 x 396 x 190
Packing Size(L x W x D in mm)	1070 x 470 x 270
Antenna Weight without Bracket (Kg)	17.2
Shipping Weight (Kg)	27.7
Radome Material	Fiberglass
Connector Type	4G : 6 x 4.3-10 Female 5G : 4 Cores Cluster 5 Cores Cluster
Connector Position (bottom / backpanel)	Bottom
Operating Temperature(°C)	-40~60
Max Wind Velocity(Kmph)	220
Windload(@150Kmph)	Rear: 359
Lightening Protection	DC Ground
Protocols Compliant	3GPP / AISG 2.0 / AISG 1.1